



carbonconscious

e info@carbonconscious.com.au

p +61 8 9286 5999 www.carbonconscious.com.au

f +61 8 9286 5918 PO Box 1338 Subiaco WA 6904

Level 1, 1 Outridge Crescent Subiaco WA 6008

Carbon Conscious Limited ABN 20 129 035 221

25 November 2008

Company Announcements Office
Australian Securities Exchange
10th Floor
20 Bond Street
SYDNEY NSW 2000

ANNOUNCEMENT NUMBER 20

Via: ASX Online

Number of Pages: 14 (including this page)

ASX Code: CCF

Dear Sir,

ASX Announcement No 20 – CEO Presentation at Annual General Meeting 2008

Please be advised that at the Carbon Conscious Limited 2008 Annual General Meeting held on 25 November 2008, Mr Peter Balsarini, Chief Executive Officer gave a presentation to the shareholders.

Enclosed is a copy of the CEO presentation.

Yours sincerely

Carbon Conscious Limited

Peter Balsarini
Chief Executive Officer and Company Secretary

encl.

Carbon Conscious Limited 2009 AGM – CEO Presentation

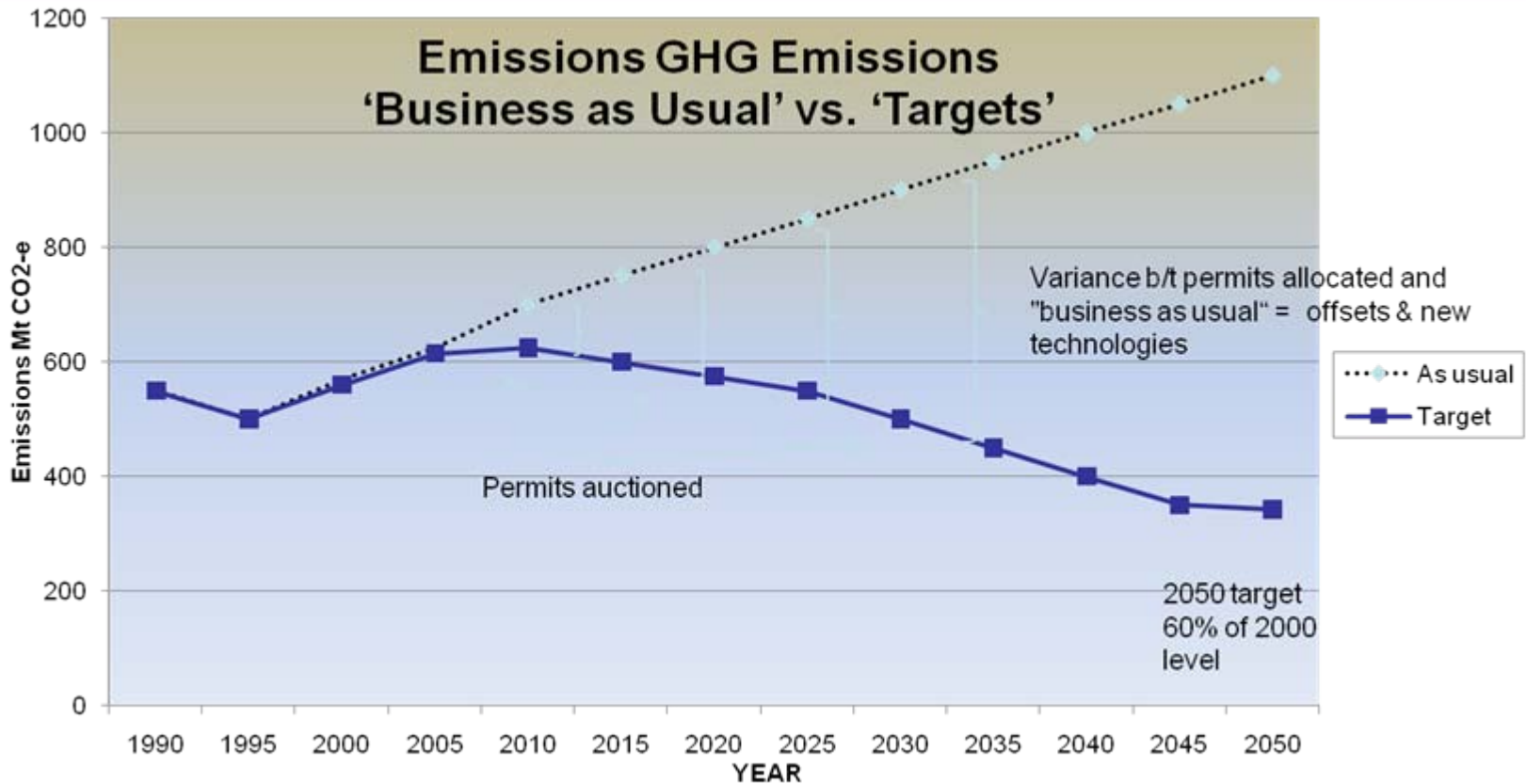


Carbon Conscious Ltd
1800 0 CARBON – 1800 22 726
Level 1, 1 Outridge Cres
Subiaco WA 6008
www.carbonconscious.com.au

Carbon Market Outlook

- Introduction of the CPRS in July 2010 on track.
- Forestry as offset verified into system.
- Govt. modeling carbon start price circa \$23+ - positive outcome.
- Politics very important.
- International market presses forward.

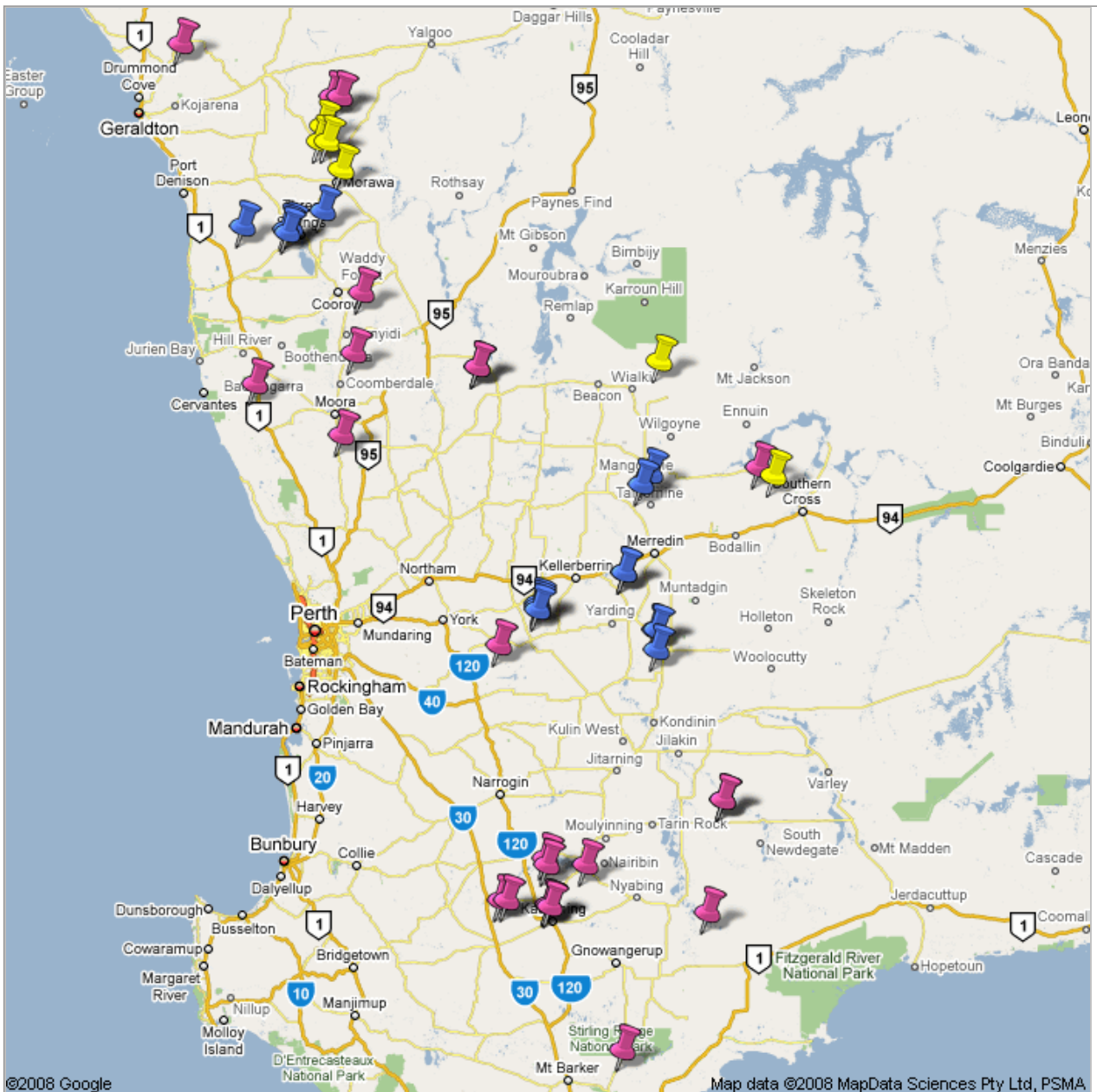
Australian Emissions Forecast



Business Focus

Development of scalable, business model via:

- AGO accreditation – development of systems, protocols and procedures.
- Robust forecasting models via sampling– 44 sites, 7,000 trees measured, 100 trees destructive sampled. [Site Map](#)
- Detailed land identification and assessment process. [Drilling Rig & Farm Map](#)
- Building focused team (9 staff)
- 100,000 trees planted 2008, 1.3M trees 2009, target 10m trees per annum.
- Contractual arrangements to enable scale via nursery, planting contractors and land bank via farmers.



LEGEND



REMNANT SITES



ACCREDITATION MEASURED SITES



FURTHER MONITORED SITES

Business Focus

Development of scalable, business model via:

- AGO accreditation – development of systems, protocols and procedures.
- Robust forecasting models via sampling– 44 sites, 7,000 trees measured, 100 trees destructive sampled. [Site Map](#)
- Detailed land identification and assessment process. [Drilling Rig & Farm Map](#)
- Building focused team (9 staff)
- 100,000 trees planted 2008, 1.3M trees 2009, target 10m trees per annum.
- Contractual arrangements to enable scale via nursery, planting contractors and land bank via farmers.

SITE 1



North

30 metre belt either side of pipe line

Hiscox Rd

1cm = 150m

Contours (to be Removed)

Water way

Dam

Belt planting with 130m alleys

Block planting

Remnant

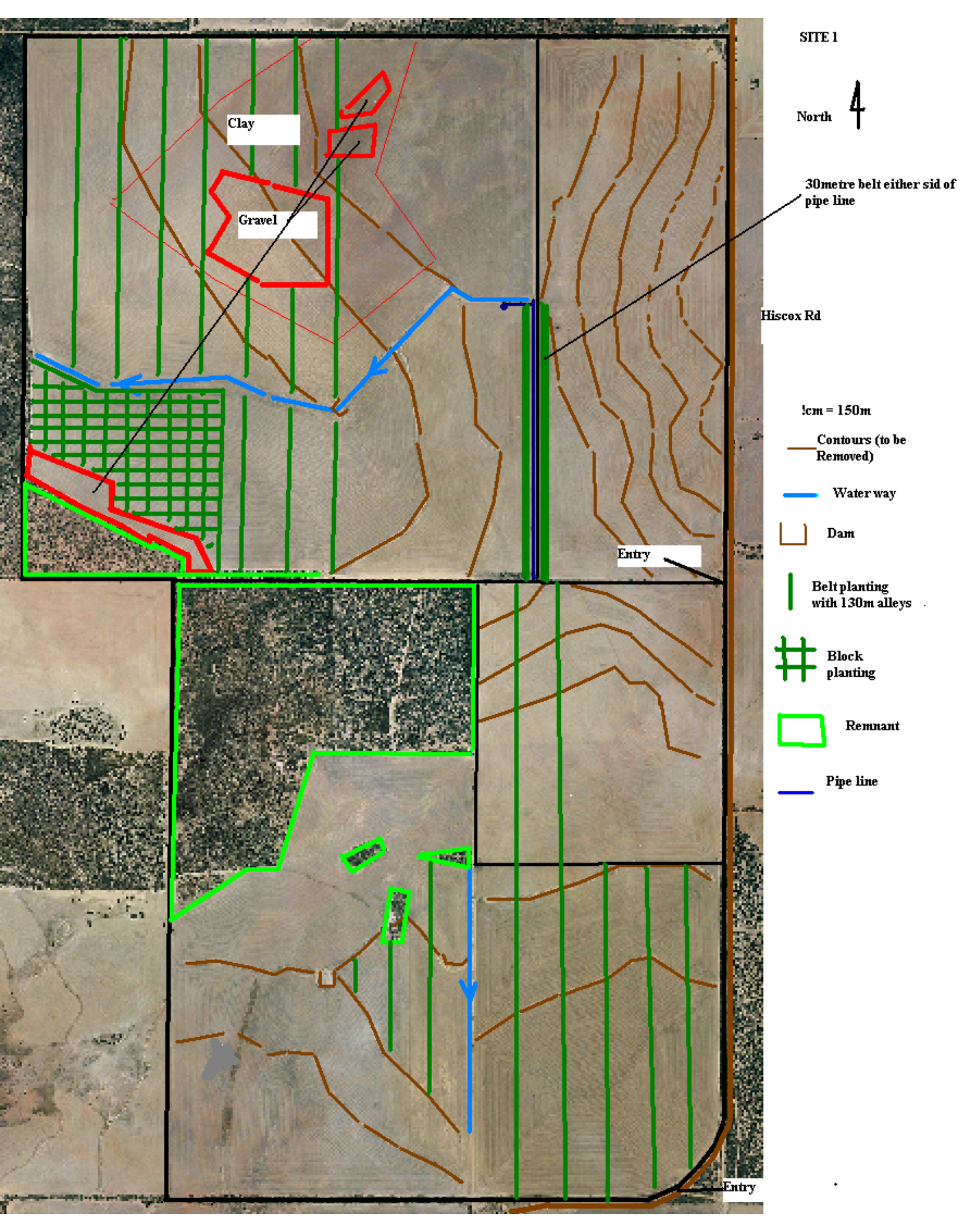
Pipe line

Clay

Gravel

Entry

Entry

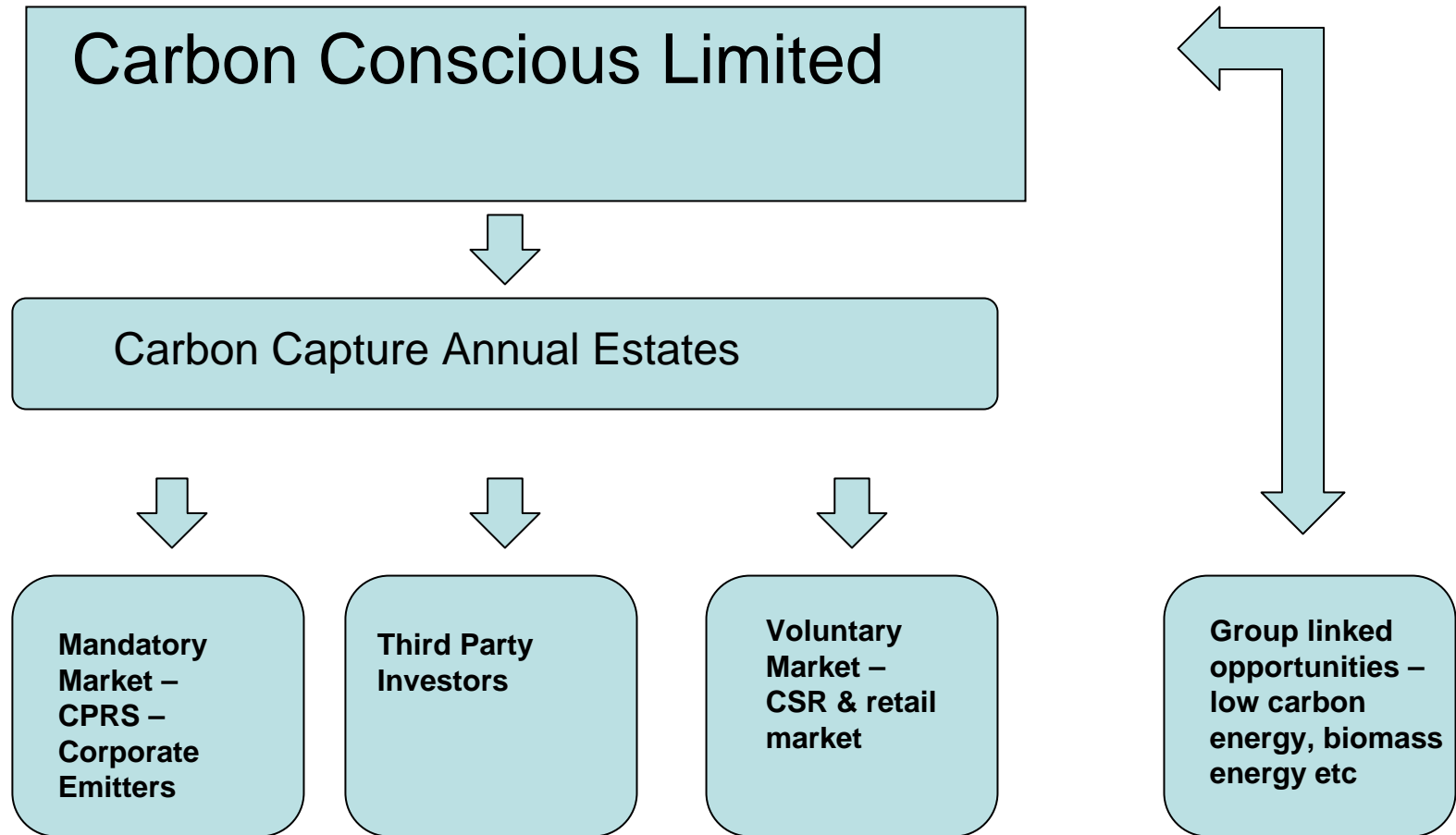


Business Focus

Development of scalable, business model via:

- AGO accreditation – development of systems, protocols and procedures.
- Robust forecasting models via sampling– 44 sites, 7,000 trees measured, 100 trees destructive sampled. [Site Map](#)
- Detailed land identification and assessment process. [Drilling Rig & Farm Map](#)
- Building focused team (9 staff)
- 100,000 trees planted 2008, 1.3M trees 2009, target 10m trees per annum.
- Contractual arrangements to enable scale via nursery, planting contractors and land bank via farmers.

CCF – Clients dealings



CCF - Client dealings

- Working with a number of large regulated companies at present.
- Opportunity to hedge carbon liability.
- Provides both upfront profit and annuity stream income.
- Launch of retail business in new year.
- Development of investment opportunities in conjunction with AACL.

Capital Position

- Cash at bank \$5.97M (30/10/2008).
- Initial focus on “emitter model”. Upfront profit + management fee income.
- Review of other opportunities ongoing.
- No requirement for additional capital from market at present time.

Outlook

- Carbon market developing rapidly.
- Continued development and refinement of mallee tree offering.
- Related agri-forestry and related product opportunities being explored.
- Focus on creating value for investors via cash generating business with long term income stream.

Thank you

